



Instructions for use
Outdoor refrigerator

R2303

Thank you for your trust and for buying this appliance. We hope it will successfully serve the purpose for many years.

Outdoor/indoor refrigerator used in households is intended for storing food at temperatures higher than 0°C.

This appliance is intended to be used in household and similar applications such as

- staff kitchen areas in shops, offices and other working environments;
- farm houses and by clients in hotels, motels and other residential type environments;
- bed and breakfast type environments;
- catering and similar non-retail applications.

TABLE OF CONTENTS

<i>Safety</i>	Safety	4
<i>Important</i>	Important	6
<i>Before Putting Into Use</i>	Before Putting Into Use	10
<i>Energy Saving Tips</i>	Energy Saving Tips	13
<i>Placing and Installation</i>	Placing and Installation	14
<i>Operation Control</i>	Operation Control	17
<i>Maintenance and cleaning</i>	Maintenance and cleaning	23
<i>Trouble-shooting guide</i>	Trouble-shooting guide	25
<i>Installation guide</i>		

Safety

Safety considerations for outdoor applications



Use this appliance only for its intended use as described in this manual.

- Do not operate the unit where the temperature will go below 7°C or above 49°C.
- Ensure the outdoor/indoor refrigerator is not installed in a location prone to standing water.
- Choose a level location that can withstand 120 kg.
- Route the power cord so that it does not present a trip hazard.
- Exterior surface can be hot in direct sunlight conditions. Use caution.
- Ensure the chosen location does not present a tip-over situation.
- Make sure dishes cool prior to storing them in the outdoor/indoor refrigerator. Certain types of glass, ceramic, earthenware or other glazed utensils retain heat. Hot dishes can cause the cold glass shelves to break.

Rating plate

The rating plate of the appliance, with information specific to the model you purchased is located in the interior of the appliance.



Important



This appliance must be properly connected to the electrical power supply (see: Connecting to the Power Supply).

Always disconnect the appliance from power supply before replacing the light bulb, cleaning and/or attempting any repairs.

When disconnecting the appliance from the wall outlet always hold the plug with your hand, and never pull the cord.



This appliance is not intended for use by persons (including children) with reduced physical, sensory, or mental capabilities, or lack of experience or knowledge, unless they have been given supervision or instruction concerning use of the appliance by a person responsible for their safety. Children should be supervised to ensure that they do not play with the appliance.

For the sake of the environmental protection be careful not to damage the rear wall of the appliance or any part of the sealed refrigerating system when moving the appliance.

The refrigerating system on this appliance is filled with refrigerant and oil. If the appliance is damaged, handle it with care and dispose of it in accordance with environmental protection requirements.

Changing the direction of door opening may also be performed by the after-sale service personnel only!

Do not store flammable, vaporizing or explosive materials in the cooler, like for example explosives or sprays containing flammable substances like propane, butane, pentane, etc. Such sprays are clearly marked with adequate symbols for danger on the exterior of the package.

Bottles with high alcohol content must be tightly sealed and stored in upright position.

WARNING: Keep ventilation openings, in the appliance enclosure or in the built-in structure, clear of obstruction.

WARNING: Do not use mechanical devices or other means to accelerate the defrosting process, other than those recommended by the manufacturer.

WARNING: Do not damage the refrigerant circuit.

WARNING: Do not use electrical appliances inside the food storage compartments of the appliance, unless they are of the type recommended by the manufacturer.

WARNING: Do not store explosive substances such as aerosol cans with a flammable propellant in the appliance.

Disposal

The environment and personal safety must be considered when disposing of this appliance. Please ensure the appliance is taken to a recycle center for safe recycling. **DO NOT** dispose of the appliance in land fill as the insulation and refrigerant gas contained in these appliances are flammable.

IMPORTANT

R600a WARNINGS

NOTE: This model uses 0.032Kg of R600a flammable refrigerant in its sealed system.

The following must be observed for your safety:

R600a Refrigerant Warning

- This appliance contains a small quantity of R600a refrigerant which is environmentally friendly, but flammable. It does not damage the ozone layer, nor does it increase the greenhouse effect.
- During transportation and installation, ensure that the tubing of the refrigerant circuit is not damaged.
- Leaking refrigerant can ignite and may damage the eyes.
- In the event any damage does occur, avoid exposure to open fires and any device which creates a spark. Disconnect the appliance from the mains power.
- Thoroughly ventilate the room in which the appliance is located for several minutes.
- Notify Customer Service for necessary action and advice.
- The room for installing the appliance must be at least 1 cubic metre per 8 grams of refrigerant. The refrigerant quantity contained in this appliance is listed above in grams; it is also noted on the Rating Plate of the appliance.

It is hazardous for anyone other than an Authorised Service Person to carry out servicing or repairs to this appliance. In Queensland the authorized person must hold a Gas Work Authorisation for hydrocarbon refrigerants, before carrying out servicing or repairs which involve the removal of covers.



The symbol on the product or on its packaging indicates that this product may not be treated as household waste. Instead it shall be handed over to the applicable collection point for the recycling of electrical and electronic equipment. By ensuring this product is disposed of correctly, you will help prevent potential negative consequences for the environment and human health, which could otherwise be caused by inappropriate waste handling of this product. For more detailed information about recycling of this product, please contact your local city office, your household waste disposal service or the shop where you purchased the product.

Before Putting Into Use

WARNING! Before connecting the appliance to the mains supply, leave it stand for about 2 hours, which will reduce a possibility of malfunctions in the refrigeration system due to transport handling.



Clean the appliance, and be thorough, especially in the interior (See Cleaning and Maintenance).

These instructions for use are intended for the user. They describe the appliance and its correct and safe use. They were prepared for various types/models of refrigerators therefore you might find in it description of some functions and of accessories that your appliance does not have.

WARNING! Before connecting the appliance to the mains supply, leave it stand for about 2 hours, which will reduce a possibility of malfunctions in the refrigeration system due to transport handling.

Clean the appliance, and be thorough, especially in the interior (See Maintenance and cleaning).

These instructions for use are intended for the user. They describe the appliance and its correct and safe use. They were prepared for various types/models of refrigerators therefore you might find in it description of some functions and of accesories that your appliance does not have.

If the supply cord is damaged, it must be replaced by the manufacturer, its service agent or similarly qualified persons in order to avoid a hazard.

Caring for your stainless steel

Stainless Steel—We strongly advise applying a commercially available stainless steel cleaner to preserve and protect the fine finish monthly.

Remove packaging

- Remove corner blocks and foam drawer stops.
- Remove all packing material and tape.
Before using, be sure all packing materials and tape have been removed.
- If you are discarding an old refrigerating-freezing appliance, remove the doors to reduce the danger of children being trapped inside.

BEFORE PUTTING INTO USE

We Care for the Environment

- Our products use environmentally friendly packaging, which can be either recycled or disposed of in an environmentally friendly manner. To this end, individual packaging materials are clearly marked.
- These instructions are printed either on recycled paper or chlorine free bleached paper.
- When your appliance finally wears out, please try not to burden the environment with it; call your nearest authorised service agent (See Disposing of the Worn Out Appliance).

Disposal of Old Appliances

- Once your appliance becomes obsolete, dispose of it immediately.
- If the appliance is equipped with a door lock mechanism, please make sure the lock is broken and / or permanently disabled, to prevent suffocation for children accidentally locked inside during play.
- The appliance contains refrigerating agent and insulation materials requiring specific decomposition procedure. Consult your local organization, authorized to deal with such materials, or call your dealer. Be careful not to damage the piping on the rear panel of the appliance.

Attention

This outdoor/indoor refrigerator must be properly leveled to ensure correct door alignment and door closure.

Connect power:

- Plug the power cord into the correctly earthed wall outlet which must never be located directly behind the appliance.
- Check to make sure power is on by opening the door to see if interior light turns on.

Slide product into the cutout:

Carefully, slide the appliance into the opening. Be careful not to entangle power cord. Note: The door should protrude 2.5 cm beyond the surrounding cabinets.

Set temperature controls:

The temperature controls are preset. Allow 24 hours for temperature to stabilize.

Energy Saving Tips

- Try not to open the door too often, especially during hot and humid weather.
- Check periodically if the appliance is sufficiently ventilated (adequate air circulation behind the appliance).
- If the door gasket is damaged and/or not sealing properly, energy consumption will be substantially higher. To restore efficiency, replace the door gasket.
- The condenser grill located on the (exterior) rear wall should always be kept clean, free of dust and dirt accumulated from kitchen fumes (see Cleaning the Appliance).
- Always follow strictly the instructions described in sections Positioning and Energy Saving Tips, otherwise the consumption of energy is increased.
- Try not to open the door too often, especially during hot and humid weather.

Placing and Installation

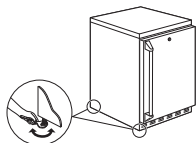
Choosing the Right Place

This appliance is for indoor or outdoor use. Allowed ambient temperature depends on the model (class) of the appliance and is indicated on the rating plate of the appliance.

- Do not operate the unit where the temperature will go below 7°C or above 49°C.
- Exterior surface can be hot in direct sunlight conditions. Use caution.

Never place the appliance near heat radiating devices. In case the distance to the heat emitting device is too short, it may require the installation of an insulation panel.

Placing the Selfstanding Appliance



1. Turn Right to lower
2. Turn Left to raise

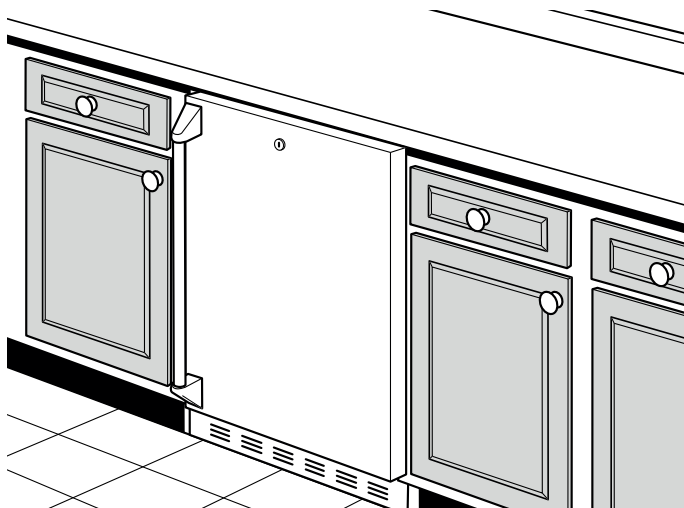
Place the appliance firmly on a solid base. The appliances have adjustable legs. Use them to level the appliance.

Level

- Use an adjustable wrench to turn the leveling legs and raise or lower the product.
- Adjust carefully, the outdoor/indoor refrigerator should be level and plumb with cabinetry, and should align with adjacent toekick height.

PLACING AND INSTALLATION

Placing the Built-in



Cut-out dimensions:

Height: 877 mm minimum

Width: 603 mm minimum

Depth: 610 mm

- Do not operate the unit where the temperature will go below 7°C or above 49°C.
- Surface can be hot in direct sunlight conditions. Use caution.

Never place the appliance near heat radiating devices. In case the distance to the heat emitting device is too short, it may require the installation of an insulation panel.



WARNING: To avoid a hazard due to instability of the appliance, it must be fixed in accordance with the instructions.

PLACING AND INSTALLATION

Connection to Power Supply

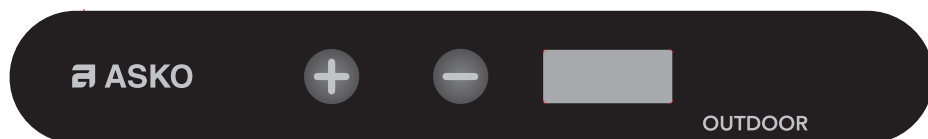
The refrigerator should be connected to a properly earthed power supply socket that is accessible when the refrigerator is installed.

Do not use extension cords or power supply boards. The power supply is to be 240V, 50 Hz.

The connection to the mains supply and earthing have to be made according to current standards and regulations. The appliance resists temporary voltage tolerance up to -6 to +6 %.

OPERATION CONTROL

Operation Control



Temperature control

The operating temperatures of the outdoor/indoor refrigerator range from 1°C to 7°C. Do not operate the unit where the temperature will go below 7°C or above 49°C.

The temperature display shows the actual temperature of the outdoor/indoor refrigerator. The actual temperature may vary slightly from the set temperature based on factors such as door openings, amount of food and outside/room temperature.

After making adjustments, allow 12 to 24 hours for the outdoor/indoor refrigerator to reach the temperature you have set and before making any further adjustments. To change the temperature settings, press the + and - pads until you reach the desired set temperature. After several seconds, the display will return to the actual temperature. The actual temperature will remain on the display while the unit moves toward the set temperature. Allow 12 to 24 hours for the outdoor/indoor refrigerator to reach the temperature you have set and before making any adjustments to the initial setting.

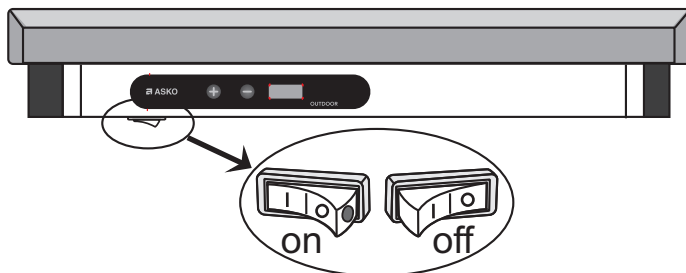
Child Lock

The child lock feature prevents unwanted changes to your temperature settings. After the desired temperature is set, the temperature can be locked. To lock, press both the + and - pads at the same time for five seconds. To unlock, press both + and - pads for five seconds.

OPERATION CONTROL

Turning the appliance on/off

The appliance can be turned on/off using the switch installed below the control unit (see picture). A red dot is visible on the switch when the appliance is turned on.



Key ejecting lock

Keep the keys out of reach of children. Store the keys in a safe place. Keys for the spring-loaded lock are automatically ejected. Keys will not remain in the lock while the door is opened or closed.

NOTE: Two keys are included.

CAUTION: Before closing the door, make sure the lock pin does not protrude beyond the top of the door, to prevent potential damage to the cover or cabinetry.

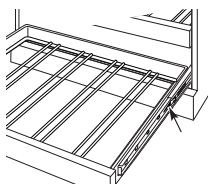
Fan

Fan improves the even distribution of temperature and decreases dew upon storage shelves. Fan operation is stopped when the refrigerator door is opened.

OPERATION CONTROL



Note: Energy consumption is increased during fan operation.



To remove:

1. Pull the telescopic shelf out to the STOP position.
2. Push the tab on right drawer guide down while pulling the tab on left guide up, and pull the shelf out.

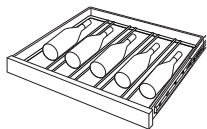
To replace:

To replace, insert the sides of the drawer back into the guides and push until the tabs snap into place.



Make sure the tabs on the drawer guides are fully engaged before loading any bottles. Pull the drawers out all the way to the STOP position and push back in several times to make sure tabs snap into place.

Loading tips and suggestions



- The two telescopic shelves hold five bottles each and are loaded with necks facing the rear. Tall bottles should not be loaded on the bottom shelf because they may prevent the door from closing.
- Do not block the thermistor, located on the right-hand side, just above the third shelf of the outdoor/indoor refrigerator. Blocking the thermistor could impair the air circulation and temperature control.
- Do not allow children to climb, stand or hang on the appliance shelves or door. They could seriously injure themselves and possibly cause damage to the appliance.

Wood drawer fronts

The telescopic shelf fronts on the appliance are unfinished wood. Wooden parts are protected with a foil which is to be removed. During use, oil from hands may accumulate and stain the wood.



Natural wood may vary slightly in grain and color.

Condenser

Be sure that nothing obstructs the required air flow openings in the front of the cabinet. For best performance, brush or vacuum lint and dirt from the condenser once a year.

Remove the cover from the bottom rear of the Outdoor/Indoor refrigerator to access the condenser.

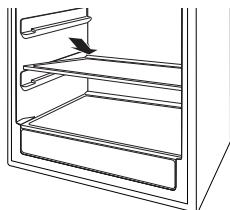
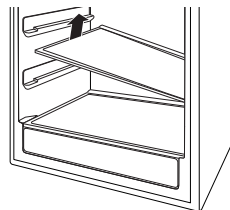
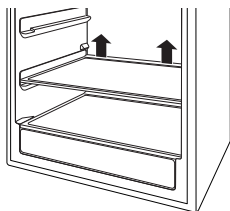
OPERATION CONTROL

Glass shelves

Tempered glass shelves in the outdoor/ indoor refrigerator are removable for easy cleaning or for storing larger items.

To remove a shelf, open the door completely to avoid potential damage to the gasket. Lift up on the back of the shelf slightly. Tilt the shelf to one side at an angle while pulling forward.

To replace a shelf, open the door completely to avoid potential damage to the gasket. Tilt the shelf to one side at an angle and slide toward the back wall, placing one side onto the shelf support. Place the other side onto the opposite shelf support. Ensure rear locking tabs are engaged. When installed properly, the shelf will not slide forward when gently pulled.



QuickSpace™ Shelf

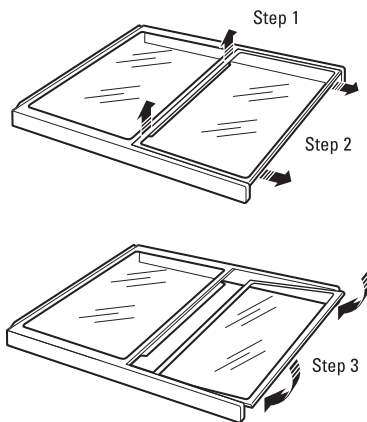
This shelf splits in half and slides under itself for storage of tall items on the shelf below.

Step 1: Lift the back edge of the front half of the shelf.

Step 2: Pull slightly forward.

Step 3: Lower the back edge of the front half of the shelf while sliding it underneath the back half.

The entire Quick Space shelf can be removed and replaced (see Glass Shelves section).



MAINTENANCE AND CLEANING

Maintenance and cleaning

Automatic defrosting

There is no need to defrost the refrigerator, because ice depositing on the inner back wall is defrosted automatically. Ice is depositing on the inner back wall during the compressor operation; later on, when the compressor is not operating ice is defrosting and water drops collect and drain through the outlet in the inner back wall into the drain pan situated above the compressor, from where it evaporates.

Cleaning the appliance



Disconnect the power supply before cleaning the appliance.

Do not use coarse or aggressive cleaning agents as you can damage the surface.

Cabinet

Your new stainless steel unit can maintain its new luster for the life of the product if maintained as described below. Keep the outside clean. Regularly polish the stainless steel exterior to preserve and protect the fine finish. Do not apply to plastic and rubber components. To avoid scratching the fine finish of the stainless steel, wipe in the same direction as the grain when polishing or cleaning any stainless steel surface. The grain on the outdoor/indoor refrigerator runs top to bottom on all sides and front to back on the top canopy.

For regular cleaning, use clean water and a soft cloth. If stains persist, wash with mild soap using a soft cloth or non-abrasive pad.

Warranty does not cover damage due to improper cleaning methods.

MAINTENANCE AND CLEANING

Interior

Wash the inside with mild soap and water or baking soda and water. Do not use an abrasive powder, solvent, polish cleaner or undiluted detergent.

Door gasket

The vinyl gasket may be cleaned with mild soap and water, a baking soda solution or a mild scouring powder. Rinse well.

After cleaning the door gasket, apply a thin layer of paraffin wax or petroleum jelly to the door gasket at the hinge side. This helps keep the gasket from sticking and bending out of shape.

Light bulb replacement

Unplug the appliance before replacing the light bulb.

To remove the light shield, push in the tab on the left side of the shield and lower it.

Replace with a 15 watt appliance bulb.

In the event of power failure

If power fails, you can maintain interior temperature longer by keeping the door closed. Open the door only when necessary to avoid the loss of cold air.



Do not store or use gasoline or other flammable vapors and liquids in the vicinity of this or any other appliance.

Drain hole

Periodically check the drain hole and channel for any debris. If the drain is blocked, condensation will not drain properly.

To check and clean the drain hole, remove the bottom two glass shelves. Sweep a damp cloth along the channel in the back of the outdoor/indoor refrigerator. Use a finger to sweep away any debris from the drain hole.

TROUBLE-SHOOTING GUIDE

Trouble-shooting guide

Sometimes you may come across a minor problem during the operation of the appliance.

Please refer to the troubleshooting guide below to assist you in identifying some of the possible causes which in most cases does not require a service call.

Trouble	Check
The Appliance Fails to Operate After Connecting it to the Power Supply	<ul style="list-style-type: none"> Check if the socket is powered and make sure the appliance is switched on (thermostat knob in operating position).
Continuous Operation of the refrigeration System	<ul style="list-style-type: none"> The door is frequently opened or left open for long periods of time. The door is not properly closed possibly an alien particle between the doors, sagging door, door gasket damaged, etc.). Excessive quantity of warm food inserted at once. The reason may be inadequate ventilation of the compressor and condenser (check the air circulation behind the appliance and clean the condenser).
Water is Leaking From the Appliance	<ul style="list-style-type: none"> Water usually leaks from the appliance if the drain outlet is blocked, or if the defrost water drips past the collecting groove. Clean the blocked outlet with a plastic straw.

Useful tips

Temperature within the appliance is not cool enough:

- Is the temperature setting adequate (see Operation Control)?
- Does the thermometer indicate correctly?
- Is the ventilation system operating properly?

Noise related problems

Cooling of the refrigerating and freezing appliances is provided by the cooling system, which incorporates a compressor and a fan – these devices produce certain noise. The level of noise emitted largely depends on the location and proper use of the appliance.

- During the operation of the compressor, certain noise of liquid flow may be detected, and during idle periods the circulation of refrigeration liquid is heard. This is a normal condition and has no impact on the life cycle of the appliance.
- Immediately after starting the appliance, the operation of the compressor and the flow of refrigerant may be louder than usual. This is not a sign of any malfunction, and has no impact on the life cycle of the appliance. Gradually the noise will be reduced.

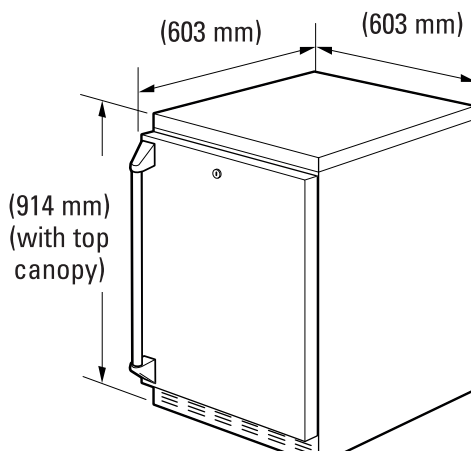
Sometimes unusual and stronger noises may be detected, which are rather unusual for the appliance. Such noises are often the result of the inappropriate installation:

- The appliance must be perfectly horizontal and installed on a solid floor.
- It should not touch the walls or adjacent cupboards.
- The appliance must be perfectly horizontal and installed on a solid floor.
- It should not touch the walls or adjacent cupboards.

INSTALLATION GUIDE

Installation dimensions

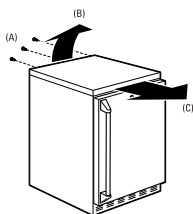
The Outdoor/Indoor refrigerator can be a free standing model or can be build in using the cut-out dimensions below.



When building in the Outdoor/Indoor refrigerator, be sure to allow for a full door swing so you have full access to the pull-out full extension drawers.

The top canopy may be removed when installing under a countertop. The door **MUST BE** closed when removing or replacing the top canopy. To avoid damage, the top canopy must clear the left hinge center locking plate and right hinge.

INSTALLATION GUIDE



- Remove the 3 screws from the back of the top canopy (A).
- Using heavy-duty work gloves, lift up on the top canopy back (B) and slide it forward until it unlatches from the unit (C).
- Lift the top canopy up and off of the unit.



Keep the top canopy and screws for future free-standing installations.

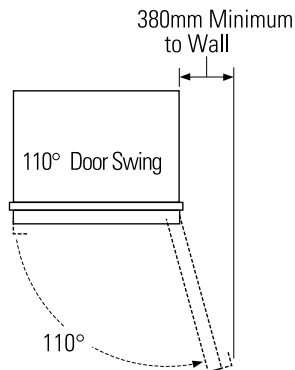
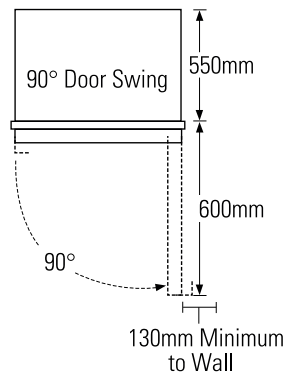
When installing the unit in a free-standing configuration, the top canopy must be left in place.

Under side edges of the stainless steel canopy top may be sharp. Wear heavy-duty work.

INSTALLATION GUIDE

The Outdoor/Indoor refrigerator is a factory set for a 110° door swing. When installed in a corner:

- Allow 130mm minimum clearance on the hinge side for the 90° door swing and to allow racks to slide out.
- Allow 380mm minimum clearance on the hinge side for a full 110° door swing.



Choose the location:

- This products may be closed in on the top and three sides as long as the front is unobstructed for air circulation and proper access to the door.
- Do not operate these products where the temperature will go below 7°C or above 49°C.

Install toekick

The toekick has a cutout on the left and right sides. Remove the plug on the left side and reinstall on the right side. If you choose to install the stainless steel toekick, reinstall the plug on the right side of that toekick.

- Install original screws and spacers or screws and spacers supplied with the stainless steel toekick.

Install screws through the spacer standoff, toekick and into the base as shown.



405097