



Instructions for use

Built-in unit

CBB901SB / INM450S1BL

Pictograms used:



Important information



Tip

CONTENT

Your built in unit

Introduction	4
Description	4

Use

Controls	5
----------	---

Maintenance

Cleaning	7
Removing the grease filters	8
Oil collector reservoir	8
Lighting	8

Technical specifications

9

Appendix

Disposal of appliance and packaging	10
-------------------------------------	----

YOUR BUILT IN UNIT

Introduction

This user manual gives you a quick overview of all the possibilities offered by the appliance. You will find information on safety measures and maintaining the appliance.

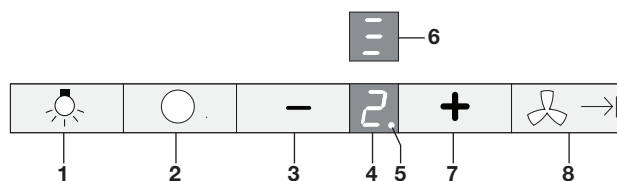


*Please retain this user manual and the installation guide.
They may be of use to future users of the appliance.*



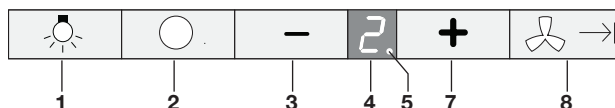
Read the separate safety instructions before using the device!

Description



1. Lighting button to switch lighting On/Off
2. On/Off button to switch the fan On/Off
3. '-' button to reduce extractor capacity
4. Display
5. Timer active indicator
6. Grease filter cleaning indicator
7. '+' button to increase extractor capacity
8. Timer button to select the timer function

Controls



Switching the lighting On or Off

1. Press the Lighting button (1) to switch the lighting On and Off.

Switching the fan on and off

1. Press the On/Off button (2) to start and stop the fan
2. Press the '-' and '+' buttons (3 and 7) to select the desired extractor setting.
 - The display (4) indicates which setting has been selected.
 - The intensive setting is indicated with (P) in the display.
 - After 4 minutes the intensive setting is automatically reduced to the setting previously selected.

Switching on the timer

1. Switch on the fan.
2. Press the Timer button (8).
 - The fan starts at setting 1 and switches Off automatically after 10 minutes.
 - The display shows a flashing led point (5).
3. Press the Timer button (8) again to switch Off the timer function.

Grease filter indicator

1. Clean the grease filter when the grease filter cleaning indicator is shown in the display.
2. Reset the grease filter cleaning indicator. While the hood is switched Off, press the On/Off button twice until the grease filter cleaning indicator disappears.

Interval function

With the interval function the fan can be switched On for 10 minutes every hour at the speed flashing in the display.

1. Press simultaneously the On/Off button and the '+' button.
 - *The display shows '1'.*
2. Press the '+' button to select a higher speed (2>3>1>2..).
3. Press again within 2 seconds simultaneously the On/Off button and the '+' button to confirm the interval function.
4. Press any button (except the light button) to deactivate the interval function.

MAINTENANCE

Cleaning



Attention! Before performing any maintenance operation, isolate the hood from the electrical supply by switching off at the connector and removing the connector fuse. Or if the appliance has been connected through a plug and socket, then the plug must be removed from the socket.

The built in unit should be cleaned regularly (at least with the same frequency with which you carry out maintenance of the fat filters) internally and externally. Do not use abrasive products. **Do not use alcohol!**

Attention! Failure to carry out the basic cleaning recommendations of the built in unit and replacement of the filters may cause fire risks. Therefore, we recommend observing these instructions. The manufacturer declines all responsibility for any damage to the motor or any fire damage linked to inappropriate maintenance or failure to observe the above safety recommendations.

Built in unit

Clean the built in unit with soapy water and a soft cloth. Then wipe with clean water to rinse. Do not use aggressive cleaning agents such as soda. The built in unit paintwork will stay looking nice if you wax it occasionally.



Stainless steel built in units

Do not use any sort of scourer. Treat with a stainless steel care product and polish with the structure of the stainless steel.

Metal grease filters

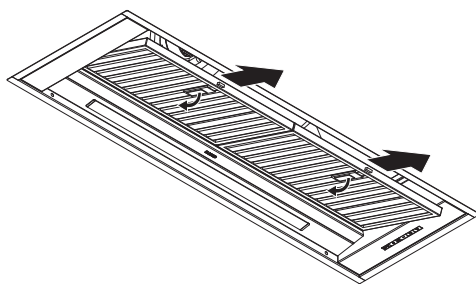
These must be cleaned once a month (or when the filter saturation indication system – if envisaged on the model in possession – indicates this necessity) using non aggressive detergents, either by hand or in the dishwasher, which must be set to a low temperature and a short cycle. The openings must be placed downwards to let the water run out of the filters. The cleaning agents will make the aluminium filter turn dull, this is normal.

MAINTENANCE

Grease filters

Removing the grease filters

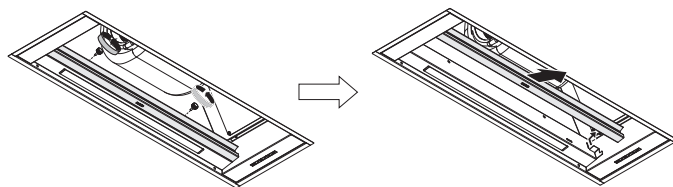
1. Switch Off the electricity! Remove the plug from the socket or switch the electricity Off at the mains.
2. Pull the grease filter handle to remove the filter.



Oil collector reservoir

The oil collector reservoir can be removed for cleaning.

1. Loosen the two screws.
2. Pull the oil collector reservoir out of the cooker hood.



Lighting

- The cooker hood is fitted with LED lighting.
- LED lamps guarantee you optimum lighting, a service life of up to 10 times longer than conventional lamps and energy savings of as much as 90%.
- **Contact the technical department when LED lighting needs to be replaced.**



TECHNICAL SPECIFICATIONS

EU Product Fiche

Data determined according to:
standard EN61591 and Commission Regulations (EU) No 65/2014 and (EU) No 66/2014.

Hood type	CBB901SB
Type / Approval	Built-in / INM450S1BL
Control type	Electronic push button
Width	85 cm
Supply <i>Voltage, Frequency</i>	220-240 V, 50/60 Hz
Power	454.8 W
Power motor	450 W
Power lights	1 x LED 4.8 W
Level 1 <i>Air flow / Noise / Pressure</i>	418 m³/h - 56 dB(A) - 419 Pa
Level 2 <i>Air flow / Noise / Pressure</i>	502 m³/h - 60 dB(A) - 475 Pa
Level 3 <i>Air flow / Noise / Pressure</i>	627 m³/h - 66 dB(A) - 540 Pa
Level p <i>Air flow / Noise / Pressure</i>	1151 m³/h - 79 dB(A) - 601 Pa

APPENDIX

Disposal

Disposal of appliance and packaging

By ensuring this product is disposed of correctly, you will help prevent potential negative consequences for the environment and human health, which could otherwise be caused by inappropriate waste handling of this product. The local authorities can provide you with the relevant information.

The packaging of this appliance is recyclable. It could have been made from:

- cardboard;
- polythene foil (PE);
- CFK-free polystyrene (PS-hard foam).

You need to dispose of these materials responsibly in accordance with official regulations.



To draw attention to the fact that the segregated processing of electric household appliances is compulsory, this appliance carries the symbol of a crossed-out dustbin. This means that at the end of its working life, you may not dispose of the appliance as household refuse. Instead, you should hand it in at a special refuse collection centre run by the local authority or at a dealer's providing this service.

Segregated processing of household appliances avoids any negative effects on the environment and public health that might otherwise occur.

It enables the recovery of the materials used in the production of this appliance, thus realising considerable savings in terms of raw materials and energy.



Declaration of conformity

We hereby declare that our products satisfy the applicable European directives, orders and regulations, as well as the requirements stated in the referenced standards.

 **ASKO**



795231